

Commercial GEAR

LASER®

MAY - JULY 2026 ISSUE 2

Heavy-Duty Axle Stands 2pc

A pair of heavy-duty axle stands built to carry heavy loads. Ideal for large vans and medium sized trucks. Designed with ease of use in mind with a steel tubular handle and wheels for easy movement around the workshop.

- Strong welded construction & storage bracket for height pin.

Code	Size	Price
9334	7 Tonne	£159.95
9335	12 Tonne	£199.95
9336	20 Tonne	£239.95



Features a shallow angled "V" shaped saddle, measuring 75 x 90mm. Adjustable height with pre-drilled holes & large diameter locking pin.

FROM

£159.95

NEW

Designed for loads up to 20 tonnes!

SEE OUR LIFTING EQUIPMENT AND MORE NEW PRODUCTS IN:



19th May 7pm
Join us for live demonstrations:
Watch our expert team demonstrate the newest tools from Laser!

www.lasertools.co.uk/LaserLive

Also features a 3-piece handle for increased portability, hard wearing chrome plated piston & welded carry handle.

Hydraulic Bottle Jack - Vertical & Horizontal

A compact hydraulic bottle jack that can be used at any angle between vertical and horizontal. This versatility makes it suitable for tasks such as straightening beams, chassis rails, positioning heavy machinery, as well as jacking.

- **Applications include:** Vehicle jacking (cars, 4x4, Vans & small trucks), industrial applications (machinery positioning & movement), agricultural machinery, frame & chassis straightening.

Code	Size	Range mm	Price
9331	8 Tonne	235 - 450	£89.95
9332	12 Tonne	235 - 480	£99.95
9333	20 Tonne	275 - 525	£139.95

Supports lifting up to 20 tonnes!

NEW

FROM

£89.95

Workshop

Portable Endoscope Camera 5" Screen with 360° Swivel Lens

9195

A professional grade endoscope with toggle function allowing the 3.9mm camera head to be moved through 360° to allow it to look back on itself. No need for small mirror attachments for looking at engine valve heads!

Records still images & video, all of which can be downloaded to a PC or laptop via Micro SD or USB-C data cable.

High-resolution LCD screen (5") 110mm x 65mm with 840 x 480 pixels (403,200 effective pixels), with 70° camera viewing angle.

Flexible, semi-rigid 3.9mm diameter camera probe is 1m long, with a remote control swivelling camera head.

CE

£299.95



PRODUCT VIDEO



£149.95

Portable Endoscope Camera 4.3" Screen with 3.9mm Camera

9196

CE

Equipped with a fixed camera head on a flexible 1000mm camera probe. Records still images and video, which can be downloaded to a PC or laptop via Micro SD or USB-C data cable.

- High-resolution LCD screen (4.3") 95mm x 54mm with 480 x 272 pixels (130,560 effective pixels), with 70° camera viewing angle.
- The extremely flexible, semi-rigid camera probe, IP67 rated for water and dust.
- Also features a built in 6 LED torch with 3 brightness levels.

LASER 50
Established 1976 YEARS

Premium Stackable Drawer Storage System

A quality impact resistant storage system offering versatile tool housing solutions with metal ball bearing drawer runners and self-latching draws.

- Stackable and lockable with multiple combinations makes this a perfect mobile solution.

4 Drawers + Top Box

9283

£199.95



2 Drawers + Top Box

9284

£149.95

NEW

2 Drawers

9285

£89.95

Trolley Base

62919

£69.95



LASER 50
Established 1976 YEARS

£54.95



NEW

Automotive Non-Slip Bit Set 40pc

9300

2x bit driver sockets in 1/2"D and 3/8"D, along with 38 interchangeable anti-slip Star*, spline and hex bits in 30mm and 75mm lengths.

- **Sizes:** Spline: M5 - M12 Hex: 4 - 12mm; Star*: T20 - T55.



£79.95

NEW

Magnetic Socket Bit Set 33pc

9301

Socket bit sets in star*, hex, and spline profiles, engineered with magnetic centres to ensure a firm hold on fixings when working in confined spaces.

- **1/4"D sizes:** Hex: 1.5 - 4.5mm; Star*: T10 - T30; Spline: M4 - M8.
- **3/8"D sizes:** Hex: 5 - 12mm; Star*: T40 - T60; Spline: M8 - M12.
- **1/2"D sizes:** Spine: M12 - M18.



Commercial
GEAR

NEW

LocSOC Bit Socket Sets

£39.95

9328

£39.95

9329

£39.95

9330



LASER 50
Established 1976 YEARS

9328

24-piece socket bit set with a satin chrome finish, presented on patented LocSOC double-line socket rail. **Sizes:** Phillips: Ph1 - Ph3; PzDrive: Pz1 - Pz3; Flat: 4 - 5.7mm, Hex: 2.5 - 8mm; Tamperproof Star* bits: T8 - T40.

9329

Magnetic LocSOC double-line socket rail with a 44-piece combination of 1/4" drive sockets and 1/4" shank bits. **Sizes:** Phillips: Ph1, Ph2 & Ph3; PzDrive: Pz1, Pz2 & Pz3; Flat: 3 - 6mm; Hex: 3 - 6mm; Star* bits: T10 - T40 and Tamperproof Star* bits: T10 - T40.

9330

21-piece socket set with a hard-wearing, functional satin chrome finish. 8x 3/8"D single hex (6pt) standard depth sockets. **Sizes:** 15, 16, 17, 18, 19, 21, 22 & 24mm. 1x 3/8"D (F) to 1/4"D (M) socket adaptor.



£59.95

Torx® Plus EPR Socket Set

1/4"D, 3/8"D, 1/2"D 16pc

7189

Complete set of EPR (5-sided) Torx Plus® profile sockets (tamper resistant), from 6EPR to 32EPR.

- 1/4"D sockets: 6EPR, 7EPR, 8EPR, 10EPR & 11EPR. Length: 25mm.
- 3/8"D sockets: 12EPR, 14EPR, 16EPR, 18EPR & 20EPR. Length: 37mm.
- 1/2"D sockets: 22EPR, 24EPR, 26EPR, 28EPR, 30EPR & 32EPR. Length: 45mm.



£29.95

Universal Joint Star Socket Set

1/4"D, 3/8"D 9pc

7146

A set of 1/4"D & 3/8"D universal joint sockets with Star* profile provide greater access to confined spaces.

- 1/4"D UJ sockets: E4, E5, E6, E7, E8 x 40mm long.
- 3/8"D UJ sockets: E10, E12, E14, E16 x 60mm long.
- Manufactured from polished chrome vanadium.



£29.95

Torx Plus® Socket Set 1/2"D 8pc

5656

- **Socket sizes:** 18EP, 20EP, 22EP, 24EP, 26EP, 28EP, 30EP, 32EP.
- Torx Plus® (6 sided) profile x 45mm long.



Torx Plus® Socket Set 3/8"D 7pc

5617

- **Socket sizes:** 10EP, 11EP, 12EP, 14EP, 16EP, 18EP, 20EP.
- Torx Plus® (6 sided) profile x 37mm long.



£14.95

Torx Plus® Socket Set 1/4"D 6pc

5616

- **Socket sizes:** 6EP, 7EP, 8EP, 10EP, 11EP and 12EP.
- Torx Plus® (6 sided) profile x 23mm long.



LASER⁵⁰
Established 1976 **50 YEARS**



£179.⁹⁵

NEW

Magnesium Alloy Twin Hammer Impact Wrench 1/2" D
9290

Twin hammer impact gun for the professional who requires high torque capabilities. Lightweight and powerful with magnesium alloy front combined with a composite plastic handle and back.

 **1.7 KG**
  **HIGH TORQUE**
  **1,283 Nm**
  **2,200 Nm**
  **8,500 RPM FREE-SPEED**
  **90 PSI WORKING PRESSURE**
 **1/2"**

LASER⁵⁰
Established 1976 **50 YEARS**



£189.⁹⁵

NEW

Magnesium Alloy Twin Hammer Impact Wrench 3/4" D
9291

Twin hammer impact gun for the professional who requires high torque capabilities. Lightweight and powerful with magnesium alloy front combined with a composite plastic handle and back.

 **1.8 KG**
  **HIGH TORQUE**
  **1,215 Nm**
  **2,200 Nm**
  **8,500 RPM FREE-SPEED**
  **90 PSI WORKING PRESSURE**
 **3/4"**

LASER⁵⁰
Established 1976 **50 YEARS**



NEW

£149.⁹⁵

Aluminium Bodied Mini Impact Wrench 1/2" D
9288

A compact yet powerful air impact gun designed for working in tight spaces. Lightweight 1-piece aluminium body, with a large internal 'jumbo' hammer.

 **1.2 KG**
  **COMPACT**
  **HIGH TORQUE**
  **746 Nm**
  **11,000 RPM FREE-SPEED**
  **90 PSI WORKING PRESSURE**
 **1/2"**

LASER⁵⁰
Established 1976 **50 YEARS**



£159.⁹⁵

NEW

Magnesium Alloy Single Hammer Impact Wrench 1/2" D
9289

A very light but powerful air gun. Ideal for general workshop use. Lightweight and powerful with magnesium alloy front combined with a composite plastic handle and back.

 **1 KG**
  **COMPACT**
  **HIGH TORQUE**
  **814 Nm**
  **10,000 RPM FREE-SPEED**
  **90 PSI WORKING PRESSURE**
 **1/2"**

LASER50
Established 1976 YEARS

£49.95

NEW

Mechanic Hammer Set 3pc

9279

The three essential hammers every toolbox should include—each crafted with traditional hickory wood handles.

Includes:

- 3.5oz cross pein hammer.
- 24oz ball pein hammer.
- 3lb club hammer.



£139.95

NEW

Stainless Steel High Quality Ratchet Set 4pc

9365

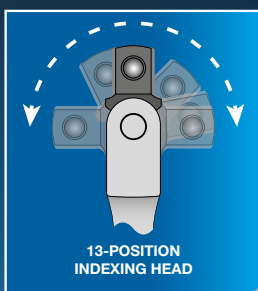
4 piece set made up of a 1/2", 3/8" & 1/4" square drive & 1/4" hex drive fine toothed ratchets, manufactured from stainless steel for a corrosion-free long lasting life.



IndexPro Breaker Bar with Comfort Grip 585mm 1/2"D

9378

Indexing head with 90° stop function ensuring stability when used at 90°. Flat sided handle to reduce point loading on hands and improve comfort for all-day use.



13-POSITION INDEXING HEAD

£49.95

NEW



NEW

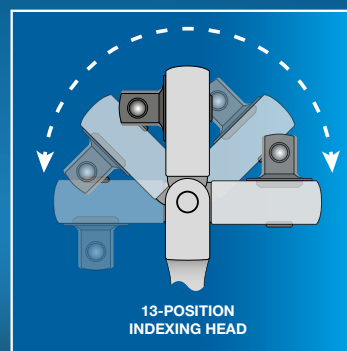
£59.95

LASER50
Established 1976 YEARS

XL Flexi Head Ratchet with Comfort Handle 635mm 1/2"D

9363

Indexing flex head 1/2" drive ratchet. Flat sided handle to reduce point loading on hands and improve comfort for all-day use.



13-POSITION INDEXING HEAD

NEW

£13.95

9264

Combination Spanner Sets

8pc Sizes: 8 - 19mm

9264

14pc Sizes: 6 - 24mm

9265

25pc Sizes: 6 - 32mm

9266

LASER50
Established 1976 YEARS

Bi-Hex (12pt) profile with 15° offset head for faster & easier use in tight spaces. Manufactured from Chrome Vanadium steel with a cold stamped matt chrome finish.



£26.95

9265

£59.95

9266

Steering & Suspension

Ball Joint Remover 39mm - for HGV

7131

Designed to fit LGV and HGV ball joints. Supplied with 3 different length pressure pieces and a threaded adaptor which allows the use of a hydraulic ram.

- Supplied with mechanical threaded force screw.
- Supplied with 1 1/2" x 16T UNF threaded adaptor to allow the use of Laser 5654 Hydraulic Ram (available separately).



£299.95



Front & Rear Stabiliser Ball Joint Remover

7706

An anti-roll bar ball-joint remover for Volvo commercial vehicles (specifically FM12) which is suitable for both front and rear ball-joints; 18mm hex drive.

- **Applications include:** Volvo FM12 Series trucks.
- Front and rear anti-roll bar ball joint splitter. Equivalent to Volvo OEM 9990814.
- Includes safety chain.



£109.95

£279.95

POWER TOOL SAFE

'Pitman' Arm Puller 58mm

- for Scania, DAF HGV

8457

The Laser 8457 steering drop arm puller (Pitman Arm) is sized specifically to fit DAF and Scania trucks requiring a 58mm puller.

- Puller body with window to allow clear view for alignment. Jaw width: 58mm.
- Designed to be used with 3/4" socketry.



£59.95

HGV Track Rod Nut Spanner - 34mm

9046

Designed to bolt over the nut providing a very strong 360 degree clamping force to allow high torque to be applied when loosening, tightening and adjusting the track rods and drag links.

- **Applications include:** DAF, Iveco, MAN, Mercedes-Benz, Neoplan, Renault & Volvo.



£99.95



Castellated Ball Joint Socket

- for Volvo B12 Bus & Coach

8017

A 6 point, castellated socket to fit the ball joints used on Volvo B9, B11 and B12 bus and coach chassis.

- 3/4"D, ID 100mm. Impact gun safe.
- 6 teeth: 9.7mm long x 5mm thick, 115mm deep.



£24.95

Ball Joint Socket - for Iveco Daily

8578

A 1/2"D ball joint socket, designed for removing the castellated fixing ring on the upper ball joint.

- Size: 1/2"D. Length: 36mm; External diameter: 41mm.
- **Application:** Iveco Daily light commercial vans 2003 to 2011.



Truck Cabin Shock Absorber Spring Compressor

7461

Safely compress and hold the coil spring prior to the removal of the shock absorber.

- **Vehicle applications include:** Volvo Trucks FM, FH 500P and 540P.
- Spring size - ID: 65mm, OD: 89mm. Use with 1/2"D ratchet.

£299.95



Pivot Bush Removal/Installation - SAF

8861

Designed to allow the SAF suspension pivot bush (3D bush) to be removed and fitted with the same tool set. Equivalent to SAF OE tool 03434332600 and 417730280000.

£439.95

- **Applications include:** SAF-Holland Intradisc Plus & Intradisc Plus "IO" & "IU" 3D pivot bushes.
- Bush numbers covered include: OE 4 177 3028 00, Febi Bilstein 40590 & MEYLE 66-34 032 0001.





£119.⁹⁵

7160



Brake Caliper Wrench Set 5pc

7160

3/4"D brake caliper wrench set for the assembly and removal of the brake caliper screw connections on commercial vehicles.

- **Contents:** Torx®: E18, E20, E24; Bi Hex: M24 & M26.
- **Applications:** E18 - MAN TGL, TGM; E20 - MAN TGL, TGM; E24 - MAN TGA, TGS and TGX; M24 - SAF; M26 - DAF XF, XF95, XF105 and XF106.



INDIVIDUAL WRENCHES

Code	Size	Applications	Price
8341	Torx® E18 x 3/4"D	MAN TGL and TGM.	£29.95
8342	Torx® E20 x 3/4"D	MAN TGL, TGM	£29.95
8343	Torx® E24 x 3/4"D	MAN TGA, TGS, TGX	£29.95



£5.⁹⁵

Brake Caliper Socket 1/2"D 26mm

6521

6 point (single Hex) impact quality socket for use on brake caliper bolts on HGV's.

- **Applications:** Scania, DAF.



9141

62416

9136

HGV Brake Caliper Wrenches

Brake caliper wrenches for releasing and refitting brake caliper mounting bolts on commercial vehicles. These caliper mounting bolts are tightened to high torque figures, this slogging wrench, designed with a 3/4" drive and two impact striking faces, is designed to get the bolts loose.

- Designed for loosening & tightening brake caliper fixing bolts.
- Torque correction factor formula that is etched on the wrench.
- Manufactured from S45C steel (hardness HRC 38-42) with a black phosphate finish.



Code	Drive	Size	Drive	Price
9141	3/4"D	20mm	Bi-Hex	£37.95
62416	3/4"D	24mm	Bi-Hex	£34.95
9136	3/4"D	18mm	Hex	£37.95



£19.⁹⁵

Caliper Adjuster Socket - Knorr-Bremse

6522

An impact quality socket for adjusting Knorr-Bremse brake calipers; 24mm hex drive.

- **Including:** Scania and Volvo AADB22X, SN6, SN7, SK7.
- 24mm hex drive x 46mm long.



£199.⁹⁵

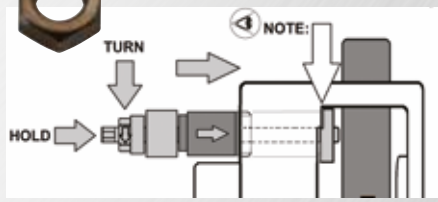


Caliper Bush Replacement Tool - Knorr-Bremse

7105

Designed to work specifically with the caliper slider repair kits listed (lower slider only).

- **Use with the following repair kits:** DAF 1847716, MAN 81508226034, MAN 81508226037, BPW Trailer Kit 0980106330.
- **Applications include:** Knorr-Bremse Calipers as fitted to DAF and MAN trucks as well as BPW Trailers.



£79.⁹⁵

Truck ABS Ring Fitting Tool

for Volvo FM Series

8372

Designed to accurately fit the ABS sensor ring in accordance with Volvo's instructions. It enables the ABS ring to be pressed into the hub evenly ensuring that it is correctly aligned and set to the correct depth to avoid inducing ABS system errors associated with incorrect fitment.



Introducing the Laser Tools

LASER[®]50
Established 1976
YEARS

FUTURE50

SUPPORTING THE NEXT 50 YEARS OF MECHANICS

For 50 years, Laser Tools has stood alongside the trade - delivering innovation, quality, and tools professionals trust. Now, as we celebrate our 50th anniversary, we're investing in what comes next.

Are you an outstanding apprentice mechanic?

Receive £500
worth of Laser Tools!
PLUS the chance to win
VIP Tickets to a BTCC Race*



WE'RE LOOKING FOR 50 APPRENTICE MECHANICS WHO ARE:

- ✓ Already enrolled in a recognised apprenticeship training course.
- ✓ Actively working within a garage environment.
- ✓ Passionate about building a career in the automotive trade.

If you're an outstanding apprentice or know someone who is, apply today!

"Our commitment to championing the future generation of professional young mechanics."

Applications close on 31st July 2026. The selected 50 apprentices will be notified in early August.

WHAT'S IN IT FOR YOU?

Each of the selected 50 apprentices will receive:

- A Laser Tools Apprentice Tool Kit**
Supporting your development with professional -quality tools designed for the workshop.
- The Chance to Win One of 3 Pairs of VIP Tickets to the BTCC at Brands Hatch (11th Oct)**
- Ongoing Support Building Your Career.**
FUTURE50 isn't just about today. It's about backing you for the long term. As part of the initiative, you'll become part of the Laser Tools community - with continued engagement, development opportunities, and support as you progress in the trade.

To learn more visit: lasertools.co.uk/future50apply

SCAN
TO ENTER



Promotion valid from 1st May - 31st July 2026 while stocks last. All products available through your local supplier of The Tool Connection Ltd branded products. All prices correct at the time of going to press and exclude VAT. The Tool Connection Ltd reserve the right to change prices or take products off of promotion without prior notice.



The Tool Connection Ltd.
Kineton Road | Southam | Warwickshire
CV47 0DR | Tel: 01926 815000